

# AMLI

# FOUNTAIN PLACE

WEEKLY ROUND-UP

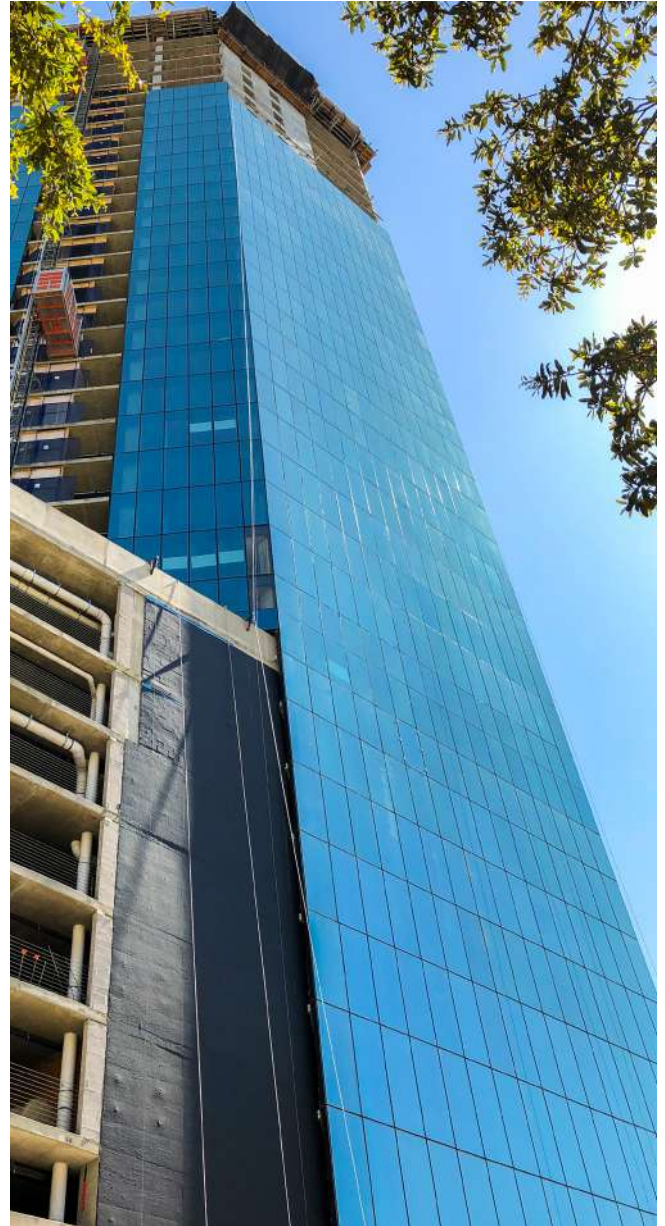
April 19, 2019 Issue 56



# PROJECT OVERVIEW

AMLI Fountain Place will be a 45-story, 849,170 SF residential tower with 367 luxury apartments, nine levels of above-grade parking, a small area of street-level retail, and 15,000 SF of amenities. The building will be a cast in place concrete design with a curtain wall enclosure and will boast large unit layouts. This premier property will feature interior design schemes that host a desirable mix of high-end finishes and dedicated outdoor spaces for residents to live BIG in the heart of Dallas.

Towering next to the iconic Fountain Place, AMLI Fountain Place earns a covetable spot in the growing Dallas skyline.



# ROCK. STEADY.



Drywall Sheetrock Gypsum Board Wallboard Plasterboard

**Call it what you want - installation is underway.**

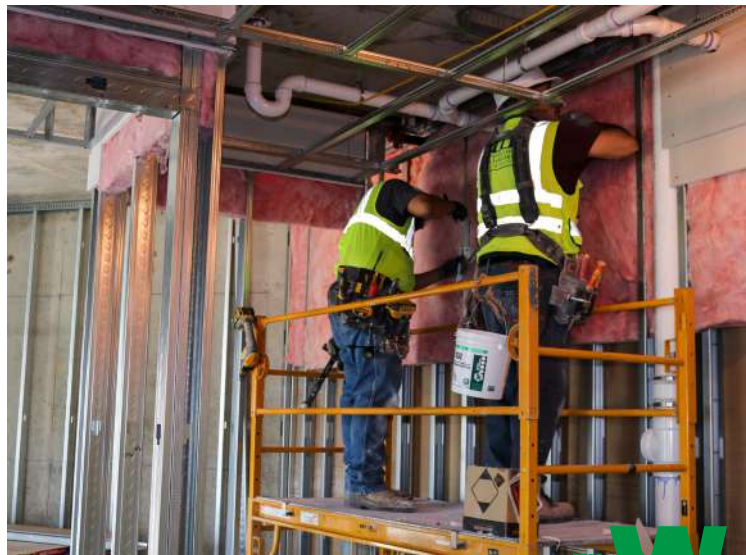
**Some framing and drywall facts:**

**1,011,200 linear feet of studs  
That's 191 miles!**

**2,585,244 square feet of drywall  
Equals 45 football fields!**



**Sheetrock is made out of gypsum (calcium sulfate dihydrate) which is mined from the ground.**





# COWBOY OF THE WEEK

# JD DOUGLAS CHERRY PAINTING



- From Mesquite, TX - the Dallas area has been home for his entire life.
- Been with Cherry Painting for 12 years. Currently is the Field Manager for the AMLI Fountain Place project.
- Got into the painting industry because it was the “greatest path of least resistance.” First started at the age of 15 through neighbor connections doing painting and general remodeling construction. Finds that doing multi-family work fits him well.
- For 24 years, he’s been married to Leanne. Together they have Ian (21) and Gillian (19).
- Enjoys vacationing in Cozumel and other parts of Mexico.
- Since he’s native to Dallas, he’s a Cowboys fan. He is also a Rangers fan since he worked on their stadium and follows all other Dallas teams.
- In his free time he enjoys working on his own art. The hobby started when he was in his early 20’s. A lot of his work is abstract and it is all displayed in his house. He also works on refinishing furniture.

#### ON SAFETY:

*“You’ve got to have it. People wouldn’t police themselves if you didn’t enforce it.”*



## Gearing up for Safety Week 2019

Every day, we step into offices and onto job sites ready for another day’s work. In our roles, we face hundreds of choices, but none are more important than our choice to work safe.

We hold ourselves accountable to our decisions and the actions and results that follow. To act otherwise is unacceptable. When we focus on safety, we protect ourselves, our families, and the communities in which we live and work. As individuals, project teams, companies, and an entire industry, we are safe by choice.

SAFE BY CHOICE

May 6-10, 2019





*a look ahead*

- Level 40 Slab Pour #1 and #2
- Decking and Rebar/MEP install for Level 40
- Shear Walls 1 & 2 and Columns to Level 41
- Steel stairs ongoing Levels 34-36
- Mechanical, Electrical, Plumbing and Fire Protection working on Levels 16-20
- Curtain wall panel installation on Level 34
- Elevator shaft wall installation continues
- Site utilities ongoing / Schedule 54 Ductile Iron connection still in review with city water department
- Interior framing is on Levels 20 / 21
- Hanging of drywall continues on Levels 12 / L13
- Tape / bed / ceiling skim coat Level 11
- Elevator crew continues rail installation
- Swimming pool continues to be installed
- Trash chute installation to start on Monday
- Waterproofing continues on the amenity deck
- Planter wall framing and pouring continues

